



A&S Roller Chain



A&S.
More than just a chain.

RENOLD

Superior Chain Technology

www.renold.com

A&S Roller Chain

More than just a chain

A&S Roller Chain

A&S roller chain has long been recognised for its high quality and affordable reliability. It has earned a strong reputation for its excellent wear resistance, high fatigue resistance and durability and these factors have helped A&S become the most widely used chain brand in Europe.

More than just a chain

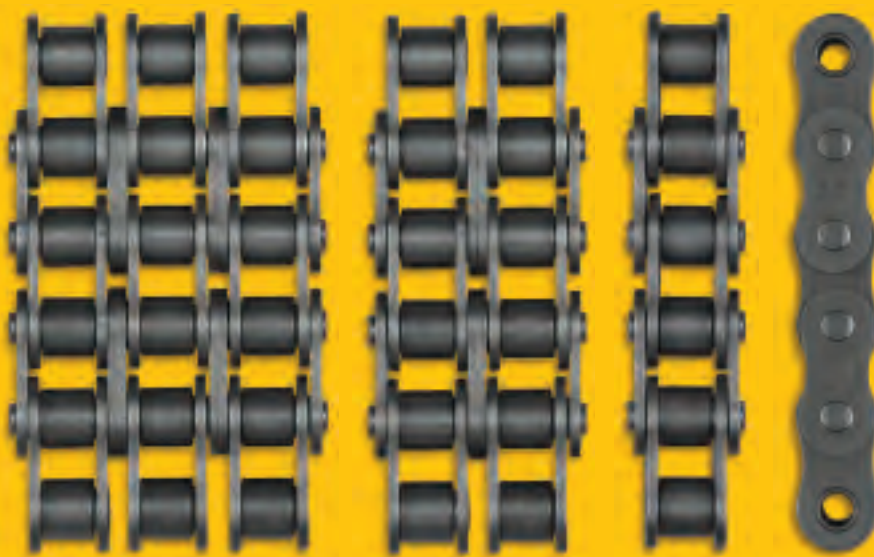
With its reliability and performance, A&S roller chain significantly contributes to reduced downtime and maintenance and has the ability to meet the needs of diverse applications and the continuously increasing demands of industry. To make sure that A&S chain keeps up with these increasing demands, a series of upgrades ensure that the range now offers even more performance benefits.

Available in European (BS) and ANSI standard, A&S chain is available with a choice of lubricant to meet customer's specific requirements.

The Renold Group

A&S roller chain is one of the many chain products from Renold, the leading manufacturer of chain and power transmission products.

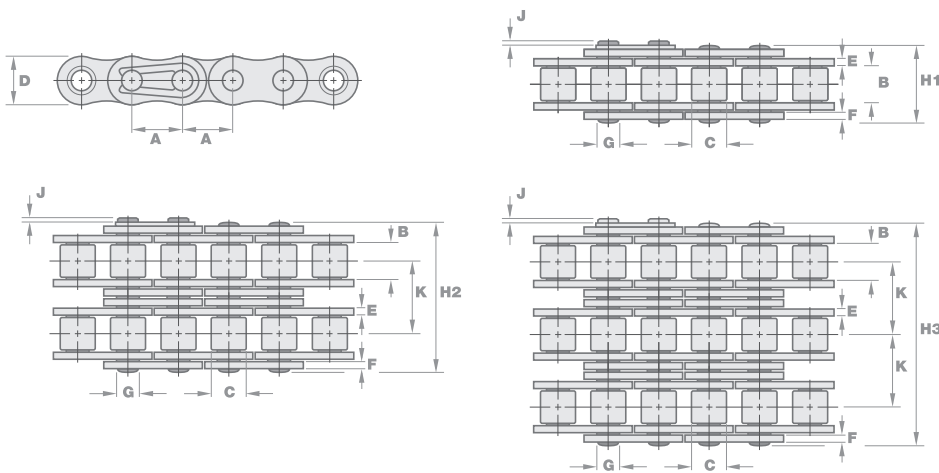
With a worldwide network of sales companies and distributors, Renold offers global product availability and support for its customers.



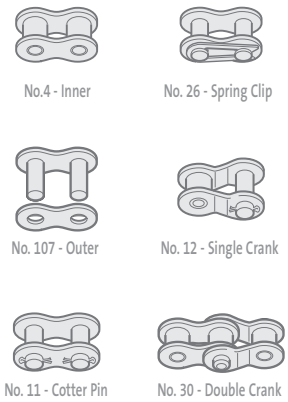
A&S chain is available with Easy Break or wedge riveted pin styles in simplex, duplex and triplex.

Further multi-strand versions are available on request.

European BS Standard



Connecting links



BS simplex chain

Dimensions (mm)

Renold Chain No.	Easy Break No.	ISO No.	Pitch	Pitch	Inside Width Min	Roller Diam Max	Plate Height Max	Inner Plate Thickness Max	Outer Plate Thickness Max	Pin Diam Max	Pin Length Max	Con Link Extension Max	Trans Pitch Nom	ISO606 Tensile Strength Min	Weight kg/m	No. 4	No. 107	No. 11	No. 26	No. 12	No. 30
			(inch)	(mm)																	
			A	A	B	C	D	E	F	G	H1	J	K								
1000001	-	-	0.158	4.000	2.700	2.500	4.100	0.570	0.570	1.650	6.800	1.200	-	1800	0.070	✓	✓	✓	-	-	-
1000002	-	03	0.197	5.000	2.500	3.200	4.100	0.570	0.570	1.490	7.400	2.500	-	2200	0.080	✓	✓	-	✓	-	✓
1000003	-	04	0.236	6.000	2.800	4.000	5.000	0.570	0.570	1.850	7.400	2.900	-	3000	0.120	✓	✓	-	✓	-	✓
1000006	-	05B-1	0.315	8.000	3.000	5.000	7.110	0.730	0.730	2.310	8.600	3.100	-	4400	0.180	✓	✓	-	✓	-	✓
1000015	A&S06B1	06B-1	0.375	9.525	5.720	6.350	8.260	1.300	1.040	3.280	12.500	1.300	-	8900	0.390	✓	✓	-	✓	-	✓
1000031	A&S08B1	08B-1	0.500	12.700	7.750	8.510	11.810	1.550	1.550	4.450	16.500	1.500	-	17800	0.700	✓	✓	-	✓	-	✓
1000040	A&S10B1	10B-1	0.625	15.875	9.650	10.160	14.730	1.550	1.550	5.080	18.800	1.300	-	22200	0.920	✓	✓	-	✓	-	✓
1000050	A&S12B1	12B-1	0.750	19.050	11.680	12.070	16.130	1.800	1.800	5.720	21.900	1.100	-	28900	1.200	✓	✓	-	✓	-	✓
1000068	A&S16B1	16B-1	1.000	25.400	17.020	15.880	21.080	4.120	3.100	8.280	34.900	2.200	-	60000	2.800	✓	✓	-	✓	✓	✓
1000075	A&S20B1	20B-1	1.250	31.750	19.560	19.050	26.420	4.620	3.610	10.190	39.800	2.700	-	95000	3.850	✓	✓	-	✓	✓	-
1000079	-	24B-1	1.500	38.100	25.400	25.400	33.400	6.100	5.080	14.630	52.600	6.800	-	160000	7.450	✓	✓	✓	-	✓	-
1000615	-	28B-1	1.750	44.450	30.990	27.940	37.080	7.620	6.350	15.900	64.200	6.800	-	200000	9.350	✓	✓	✓	-	✓	-
1000617	-	32B-1	2.000	50.800	30.990	29.210	42.290	7.110	6.350	17.810	63.400	8.000	-	250000	10.100	✓	✓	✓	-	✓	-
1000620	-	40B-1	2.500	63.500	39.300	39.370	52.960	8.130	8.130	22.890	78.200	9.500	-	355000	16.500	✓	✓	✓	-	✓	-

Connecting links



BS duplex chain

Renold Chain No.	Easy Break No.	ISO No.	Pitch	Pitch	Inside Width Min	Roller Diam Max	Plate Height Max	Inner Plate Thickness Max	Outer Plate Thickness Max	Pin Diam Max	Pin Length Max	Con Link Extension Max	Trans Pitch Nom	ISO606 Tensile Strength Min	Weight kg/m	No. 4	No. 107	No. 11	No. 26	No. 12	No. 30
			(inch)	(mm)																	
			A	A	B	C	D	E	F	G	H2	J	K								
1000004	-	04	0.236	6.000	2.800	4.000	5.000	0.570	0.570	1.850	7.400	2.900	5.500	6000	0.240	✓	✓	-	✓	-	✓
1000007	-	05B-2	0.315	8.000	3.000	5.000	7.110	0.730	0.730	2.310	14.300	3.100	5.640	7800	0.360	✓	✓	-	✓	-	✓
1000016	A&S06B2	06B-2	0.375	9.525	5.720	6.350	8.260	1.300	1.040	3.280	23.000	1.300	10.240	16900	0.780	✓	✓	-	✓	-	✓
1000032	A&S08B2	08B-2	0.500	12.700	7.750	8.510	11.810	1.550	1.550	4.450	30.400	1.500	13.920	31100	1.380	✓	✓	-	✓	-	✓
1000041	A&S10B2	10B-2	0.625	15.875	9.650	10.160	14.730	1.550	1.550	5.080	35.400	1.300	16.590	44500	1.800	✓	✓	-	✓	-	✓
1000051	A&S12B2	12B-2	0.750	19.050	11.680	12.070	16.130	1.800	1.800	5.720	41.400	1.100	19.460	57800	2.400	✓	✓	-	✓	-	✓
1000069	A&S16B2	16B-2	1.000	25.400	17.020	15.880	21.080	4.120	3.100	8.280	66.800	2.200	31.880	106000	5.500	✓	✓	-	✓	✓	✓
1000076	A&S20B2	20B-2	1.250	31.750	19.560	19.050	26.420	4.620	3.610	10.190	76.700	2.700	36.450	170000	7.800	✓	✓	-	✓	✓	-
1000080	-	24B-2	1.500	38.100	25.400	25.400	33.400	6.100	5.080	14.630	101.300	6.800	48.360	280000	14.800	✓	✓	✓	-	✓	-
1000611	-	28B-2	1.750	44.450	30.990	27.940	37.080	7.620	6.350	15.900	123.700	6.800	59.560	360000	18.600	✓	✓	✓	-	✓	-
1000618	-	32B-2	2.000	50.800	30.990	29.210	42.290	7.110	6.350	17.810	122.000	8.000	58.550	450000	20.100	✓	✓	✓	-	✓	-
1000621	-	40B-2	2.500	63.500	39.300	39.370	52.960	8.130	8.130	22.890	150.500	9.500	72.290	630000	32.800	✓	✓	✓	-	✓	-

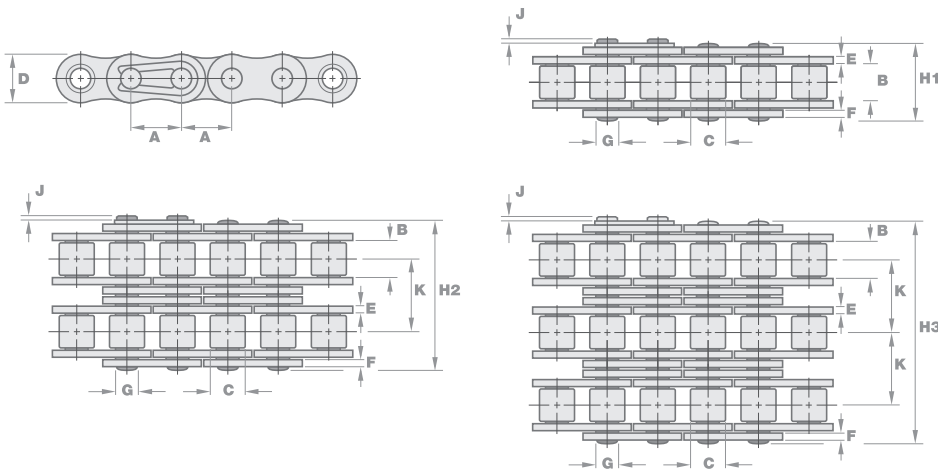
BS triplex chain

Renold Chain No.	Easy Break No.	ISO No.	Pitch	Pitch	Inside Width Min	Roller Diam Max	Plate Height Max	Inner Plate Thickness Max	Outer Plate Thickness Max	Pin Diam Max	Pin Length Max	Con Link Extension Max	Trans Pitch Nom	ISO606 Tensile Strength Min	Weight kg/m	No. 4	No. 107	No. 11	No. 26	No. 12	No. 30
			(inch)	(mm)																	
			A	A	B	C	D	E	F	G	H3	J	K								
1000008	-	05B-3	0.315	8.000	3.000	5.000	7.110	0.730	0.730	2.310	19.900	3.100	5.640	11100	0.540	✓	✓	-	✓	-	✓
1000017	-	06B-3	0.375	9.525	5.720	6.350	8.260	1.300	1.040	3.280	33.300	1.300	10.240	24900	1.180	✓	✓	-	✓	-	✓
1000033	-	08B-3	0.500	12.700	7.750	8.510	11.810	1.550	1.550	4.450	44.300	1.500	13.920	44500	2.000	✓	✓	-	✓	-	✓
1000042	-	10B-3	0.625	15.875	9.650	10.160	14.730	1.550	1.550	5.080	52.000	1.300	16.590	66700	2.800	✓	✓	-	✓	-	✓
1000052	-	12B-3	0.750	19.050	11.680	12.070	16.130	1.800	1.800	5.720	60.900	1.100	19.460	86700	3.800	✓	✓	-	✓	-	✓
1000070	-	16B-3	1.000	25.400	17.020	15.880	21.080	4.120	3.100	8.280	98.600	2.200	31.880	160000	8.150	✓	✓	-	✓	✓	-
1000077	-	20B-3	1.250	31.750	19.560	19.050	26.420	4.620	3.610	10.190	113.200	2.700	36.450	250000	11.650	✓	✓	-	✓	✓	-
1000081	-	24B-3	1.500	38.100	25.400	25.400	33.400	6.100	5.080	14.630	149.700	6.800	48.360	425000	22.250	✓	✓	✓	-	✓	-
1000616	-	28B-3	1.750	44.450	30.990	27.940	37.080	7.620	6.350	15.900	183.300	6.800	59.560	530000	28.000	✓	✓	✓	-	✓	-
1000619	-	32B-3	2.000	50.800	30.990	29.210	42.290	7.110	6.350	17.810	180.500	8.000	58.550	670000	30.000	✓	✓	✓	-	✓	-
1000797	-	40B-3	2.500	63.500	39.300	39.370	52.960	8.130	8.130	22.890	222.800	9.500	72.290	950000	48.900	✓	✓	✓	-	✓	-

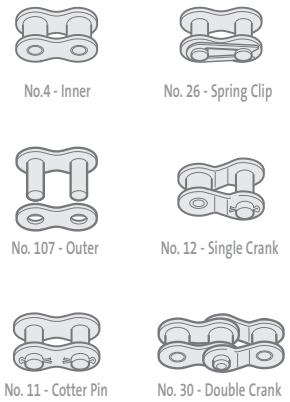
Renold Chain products that are dimensionally in line with the ISO standard far exceed the stated ISO minimum tensile strength requirements. However Renold does not consider breaking load to be a key indicator of performance because it ignores the principal factors of wear and fatigue. In these areas, Renold products are designed to produce the best possible results and independent testing proves this. In this catalogue, where the ISO breaking load is quoted, it should be noted that we are stating that the A&S chain conforms to the ISO minimum standard. Independent test results show that the minimum (many companies quote averages) breaking loads are far in excess of the ISO minimum.

For some chain types the product has no relevant ISO standard. In this case, the breaking loads quoted are the minimum guaranteed.

ANSI Standard



Connecting links



ANSI standard simplex

Dimensions (mm)

Renold Chain No.	Easy Break No.	ANSI No.	Pitch (inch)	Pitch (mm)	Inside Width Min	Roller Diam Max	Plate Height Max	Inner Plate Thickness Max	Outer Plate Thickness Max	Pin Diam Max	Pin Length Max	Con Link Extension Max	Trans Pitch Nom	ISO606 Tensile Strength Min	Weight kg/m	Connecting links								
																No. 4	No. 107	No. 11	No. 26	No. 12	No. 30	No. 58		
			A	A	B	C	D	E	F	G	H1	J	K	kN										
1000083	-	25-1	0.250	6.350	3.100	3.300	5.900	0.730	0.730	2.310	7.900	2.200	-	3500	0.130	✓	✓	-	✓	-	✓	-	✓	-
1000086	-	35-1	0.375	9.525	4.680	5.080	9.050	1.250	1.250	3.600	12.000	1.100	-	7900	0.350	✓	✓	-	✓	-	✓	-	✓	-
1000090	-	40-1	0.500	12.700	7.850	7.950	12.070	1.500	1.500	3.960	16.400	1.400	-	13900	0.600	✓	✓	-	✓	-	✓	-	✓	-
1000095	A&S50-1	50-1	0.625	15.875	9.400	10.160	15.090	2.030	2.030	5.090	20.400	1.100	-	21800	1.000	✓	✓	✓	✓	✓	✓	✓	✓	✓
1000102	A&S60-1	60-1	0.750	19.050	12.570	11.910	18.100	2.390	2.390	5.960	25.300	1.100	-	31300	1.470	✓	✓	✓	✓	✓	✓	✓	✓	✓
1000110	A&S80-1	80-1	1.000	25.400	15.750	15.880	24.130	3.250	3.250	7.940	32.700	3.000	-	55600	2.800	✓	✓	✓	✓	✓	✓	✓	✓	✓
1000116	-	100-1	1.250	31.750	18.900	19.050	30.170	4.060	4.060	9.540	39.700	4.200	-	87000	4.200	✓	✓	✓	✓	✓	✓	✓	✓	✓
1000120	-	120-1	1.500	38.100	25.230	22.230	36.200	4.800	4.800	11.110	49.300	5.300	-	125000	5.700	✓	✓	✓	✓	✓	✓	✓	✓	✓
1000124	-	140-1	1.750	44.450	25.230	25.400	42.230	5.610	5.610	12.710	52.900	5.200	-	170000	7.800	✓	✓	✓	✓	✓	✓	✓	✓	✓
1000126	-	160-1	2.000	50.800	31.550	28.580	48.260	6.350	6.350	14.290	63.100	6.500	-	223000	10.400	✓	✓	✓	✓	✓	✓	✓	✓	✓
1000914	-	200-1	2.500	63.500	37.850	39.670	60.330	8.130	8.130	19.850	76.900	9.000	-	347000	17.300	✓	✓	✓	✓	✓	✓	✓	✓	✓



ANSI standard duplex

Renold Chain No.	Easy Break No.	ANSI No.	Pitch (inch)	Pitch (mm)	Inside Width Min	Roller Diam Max	Plate Height Max	Inner Plate Thickness Max	Outer Plate Thickness Max	Pin Diam Max	Pin Length Max	Con Link Extension Max	Trans Pitch Nom	ISO606 Tensile Strength Min	Weight kg/m	Connecting links								
																No. 4	No. 107	No. 11	No. 26	No. 12	No. 30	No. 58		
			A	A	B	C	D	E	F	G	H2	J	K	kN										
1000084	-	25-2	0.250	6.350	3.100	3.300	6.020	0.730	0.730	2.310	15.500	2.200	6.400	7000	0.260	✓	✓	-	✓	-	✓	-	✓	-
1000087	-	35-2	0.375	9.525	4.680	5.080	9.050	1.250	1.250	3.600	22.200	1.100	10.130	15800	0.700	✓	✓	-	✓	-	✓	-	✓	-
1000091	-	40-2	0.500	12.700	7.850	7.950	12.070	1.550	1.550	3.960	30.800	1.400	14.380	27800	1.200	✓	✓	-	✓	-	✓	-	✓	-
1000096	-	50-2	0.625	15.875	9.400	10.160	15.090	2.030	2.030	5.090	38.400	1.100	18.110	43600	1.900	✓	✓	✓	✓	✓	✓	✓	✓	✓
1000103	-	60-2	0.750	19.050	12.570	11.910	18.100	2.390	2.390	5.960	48.100	1.100	22.780	62600	2.900	✓	✓	✓	✓	✓	✓	✓	✓	✓
1000111	-	80-2	1.000	25.400	15.750	15.880	24.130	3.250	3.250	7.940	61.900	3.000	29.290	112200	5.500	✓	✓	✓	✓	✓	✓	✓	✓	✓
1000117	-	100-2	1.250	31.750	18.900	19.050	30.170	4.060	4.060	9.540	75.400	4.200	35.760	174000	8.400	✓	✓	✓	✓	✓	✓	✓	✓	✓
1000121	-	120-2	1.500	38.100	25.230	22.230	36.200	4.800	4.800	11.110	94.700	5.300	45.440	250000	11.000	✓	✓	✓	✓	✓	✓	✓	✓	✓
1000125	-	140-2	1.750	44.450	25.230	25.400	42.230	5.610	5.610	12.710	101.800	5.200	48.870	340000	15.500	✓	✓	✓	✓	✓	✓	✓	✓	✓
1000127	-	160-2	2.000	50.800	31.550	28.580	48.260	6.350	6.350	14.290	121.600	6.500	58.550	446000	20.600	✓	✓	✓	✓	✓	✓	✓	✓	✓

ANSI standard triplex

Renold Chain No.	Easy Break No.	ANSI No.	Pitch (inch)	Pitch (mm)	Inside Width Min	Roller Diam Max	Plate Height Max	Inner Plate Thickness Max	Outer Plate Thickness Max	Pin Diam Max	Pin Length Max	Con Link Extension Max	Trans Pitch Nom	ISO606 Tensile Strength Min	Weight kg/m	Connecting links								
																No. 4	No. 107	No. 11	No. 26	No. 12	No. 30	No. 58		
			A	A	B	C	D	E	F	G	H3	J	K	kN										
1000085	-	25-3	0.250	6.350	3.100	3.300	6.020	0.730	0.730	2.310	21.800	2.200	6.400	10500	0.390	✓	✓	-	✓	-	✓	-	✓	-
1000088	-	35-3	0.375	9.525	4.680	5.080	9.050	1.250	1.250	3.600	32.200	1.100	10.130	23700	1.050	✓	✓	-	✓	-	✓	-	✓	-
1000092	-	40-3	0.500	12.700	7.850	7.950	12.070	1.500	1.500	3.960	45.100	1.400	14.380	41700	1.800	✓	✓	-	✓	-	✓	-	✓	-
1000097	-	50-3	0.625	15.875	9.400	10.160	15.090	2.030	2.030	5.090	56.500	1.100	18.110	65400	2.900	✓	✓	✓	✓	✓	✓	✓	✓	✓
1000104	-	60-3	0.750	19.050	12.570	11.910	18.100	2.390	2.390	5.960	70.900	1.100	22.780	93900	4.300	✓	✓	✓	✓	✓	✓	✓	✓	✓
1000112	-	80-3	1.000	25.400	15.750	15.880	24.130	3.250	3.250	7.940	91.200	3.000	29.290	166800	8.300	✓	✓	✓	✓	✓	✓	✓	✓	✓
1000118	-	100-3	1.250	31.750	18.900	19.050	30.170	4.060	4.060	9.540	111.200	4.200	35.760	261000	12.600	✓	✓	✓	✓	✓	✓	✓	✓	✓
1000122	-	120-3	1.500	38.100	25.230	22.230	36.200	4.800	4.800	11.110	140.200	5.300	45.440	375000	16.700	✓	✓	✓	✓	✓	✓	✓	✓	✓
1000191	-	140-3	1.750	44.450	25.230	25.400	42.230	5.610	5.610	12.710	150.700	5.200	48.870	510000	23.100	✓	✓	✓	✓	✓	✓	✓	✓	✓
1000192	-	160-3	2.000	50.800	31.550	28.580	48.260	6.350	6.350	14.290	180.200	6.500	58.550	669000	31.000	✓	✓	✓	✓	✓	✓	✓	✓	✓

Renold Chain products that are dimensionally in line with the ISO standard far exceed the stated ISO minimum tensile strength requirements. However Renold does not consider breaking load to be a key indicator of performance because it ignores the principal factors of wear and fatigue. In these areas, Renold products are designed to produce the best possible results and independent testing proves this. In this catalogue, where the ISO breaking load is quoted, it should be noted that we are stating that the A&S chain conforms to the ISO minimum standard. Independent test results show that the minimum (many companies quote averages) breaking loads are far in excess of the ISO minimum.

For some chain types the product has no relevant ISO standard. In this case, the breaking loads quoted are the minimum guaranteed.



New A&S chain includes solid extruded bush and roller components, not the weaker curled bushes offered by some other manufacturers. This combination ensures that there are no concentrated areas of stress within the bearing area which dramatically reduce the working life of the chain by increasing wear.

A&S roller chain is available with the Easy Break feature allowing easier chain disassembly. A wedge riveted pin is also available. The side plates have been upgraded to have a wider waist, a feature recognised as producing better stress distribution and thus improving the fatigue resistance of the chain.

This improves the chain's dynamic load capability. The heat treatment they receive as standard also contributes to their durability.

- Available with Easy Break or wedge riveting
 - Solid extruded bush
 - Solid extruded roller
 - High waisted plates
 - Hardened and shot-peened plates
 - Comprehensive European (BS) and ANSI standard ranges
 - Wide range of attachments available
 - Choice of lubricant to meet customer's requirements
- A&S - more than just a chain



Australia**Melbourne (Victoria)**

Tel: + 61 (0) 3 9262 3333
Fax: + 61 (0) 3 9561 8561
e-mail: melsmg@renold.com.au

*also at: Sydney, Brisbane, Adelaide, Perth,
Newcastle, Wollongong, Townsville*

Austria**Vienna**

Tel: + 43 (0) 1 330 3484
Fax: + 43 (0) 1 330 3484-5
e-mail: office@renold.at

*also at: Kiskörös (Hungary),
Jaroslavice (Czech Republic)*

Belgium**Brussels**

Tel: + 32 (0) 2 201 1262
Fax: + 32 (0) 2 203 2210
e-mail: info@renold.be

Canada**Brantford (Ontario)**

Tel: + 1 519 756 6118
Fax: + 1 519 756 1767
e-mail: inquiry@renoldcanada.com

also at: Montreal

China**Shanghai**

Tel: + 21 5046 2696
Fax: + 21 5046 2695
e-mail: sales@renold.cn

France**Seclin**

Tel: + 33 (0) 320 16 29 29
Fax: + 33 (0) 320 16 29 00
e-mail: contact@brampton-renold.com

Germany**Einbeck**

Tel: + 49 (0) 5562 810
Fax: + 49 (0) 5562 81130
e-mail: info@renold.de

*also at: Bielefeld, Düsseldorf,
Kornwestheim*

Malaysia**Selangor Darul Ehsan**

Tel: + 60 3-5122 7880
Fax: + 60 3-5122 7881
e-mail: sales@renoldmalaysia.com

also at: Johor Bharu, Ipoh, Penang

Netherlands**Amsterdam**

Tel: + 31 (0)20 6146661
Fax: + 31 (0)20 6146391
e-mail: info@renold.nl

New Zealand**Auckland**

Tel: + 64 9828 5018
Fax: + 64 9828 5019
e-mail: aksales@renold.co.nz

also at: Christchurch

Philippines**Paranaque City**

Tel: + 63 2 829 6086
Fax: + 63 2 826 5211

Russia**Moscow**

Tel: + 7 926 220 6544

Scandinavia**Brøndby (Copenhagen)**

Tel: + 45 43 45 26 11
Fax: + 45 43 45 65 92
e-mail: infor@renold.com

Singapore

Tel: + 65 6760 2422
Fax: + 65 6760 1507
e-mail: sales@renold.sg

South Africa**Benoni (Johannesburg)**

Tel: + 27 11 747 9500
Fax: + 27 11 747 9505
e-mail: sales@renold.co.za

*also at: Richards Bay,
Port Elizabeth, Cape Town*

Switzerland**Dübendorf (Zürich)**

Tel: + 41 (0) 44 824 8484
Fax: + 41 (0) 44 824 8411
e-mail: duebendorf@renold.com

also at: Crissier (Lausanne)

UK**Burton upon Trent**

Tel: + 44 (0) 1283 512940
Fax: + 44 (0) 1283 512628
e-mail: ukchain@renold.com

USA**Morristown TN**

Tel: + 1 800 251 9012
Fax: + 1 423 581 2399
e-mail: sales@renoldjeffrey.com

*For other country distributors please contact
Renold UK.*

*Whilst all reasonable care in compiling the
information contained in this brochure is taken,
no responsibility is accepted for printing errors.*

*All information contained in this brochure is
subject to change after the date of publication.*

© Renold Power Transmission 2006.
Ref: REN20 / ENG / 07.06

RENOLD
Superior Chain Technology